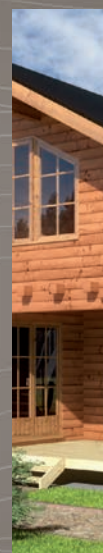
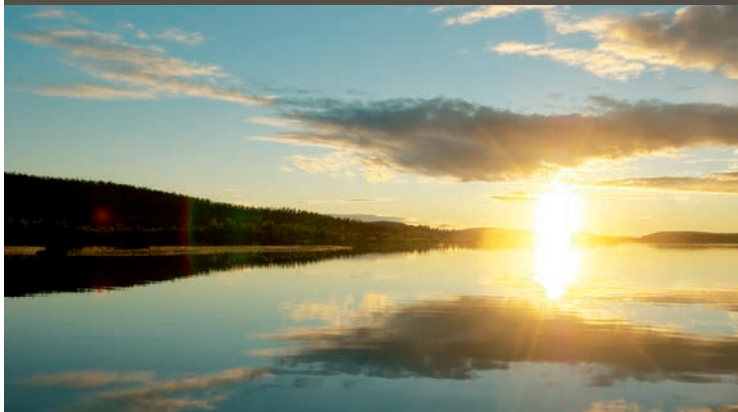


INDIVIDUAL AND ECOLOGICAL LOG HOUSES

Natural Collection



 **artichouse** 
Quality log houses from Finland



2

The Company 3

Technique 4

Natural Collection 8

IDYLLE 8

CHARME 9

CASTEL 10

RIVERBANK 11

SIERRA 12

RIVIERA 13

COUNTRYSIDE 14

PROVENCE 15

COASTAL 16

COTTAGE 17

COLONIAL 18

CALIFORNIA 19

FLORIDA 20

OCEANIC 21

FUTURE 22

Made-to-measure 23

Housing tradition and innovation

Although a young country, Finland is steeped in tradition. The construction of log houses is one such tradition, which we at Artichouse continue with pride, passion and an innovative approach. We are committed to upholding traditional values, and we use our creativity on a daily basis to this end, inspired by the many different countries for which our houses are destined.

The models shown in this catalogue are the result of many years of experience in log houses construction, where both traditional and contemporary styles strike chords with our clients.

The houses in some of the pictures were specially customised and do not necessarily match the basic construction format drawings. All dimensions are approximate. We are not liable for errors or faults, and we reserve the right to modify the product.

Artichouse® is a registered trademark of Suomen Lomakoti Oy

THE COMPANY



Arctic Circle



Over 35 years of experience in log house construction

From the very beginning we at **Artichouse** set out to combine the time-honoured Finnish tradition of log house construction with fresh new ideas and state-of-the-art technology. This strategy has proved a success: **today, Artichouse is one of the leading market exporters of log houses in Finland.**

Our enthusiasm, extensive expertise, relentless striving for quality and the resulting market recognition, mean that we can continue to **produce innovative, ecological and cosy log houses.**

From standard Artichouse models to individually **architect-designed** houses, to complete holiday home complexes - we offer the entire range. Our experience and approach are evident in the tiniest details and allow you plenty of scope to realise **your own dreams** and your very own personal home living concept.

So it's no surprise that Artichouse log houses **are now enjoyed in more than 40 countries** throughout the world. We are making every effort to maintain this popularity. The expansion of our production operations and investment in **new technologies** guarantee our status as a **reliable, responsible partner**, both in our native Finland and abroad.

Why not check out our web pages to see a selection of the unique log houses which can be custom-built for you?

The doors are always open at Artichouse!

Production

The Artichouse production plant is located in **Lapland** or, more precisely, in Sodankylä, - a small town 130 km to the north of the Arctic Circle.

It is here, in the native habitat of the **Nordic pine**, where we make your wishes and dreams come true, and turn your plans into reality.

The raw material is carefully chosen and production operations strictly monitored. We use the most cutting-edge technology and the vast know-how of our experienced staff. Our production machines are CAD/CAM controlled and Artichouse personnel have a special understanding of wood.

An exceptionally high degree of accurate pre-fabrication saves you time and money at the construction stage.





4

We only use highest quality wood for our houses

Century-old solid timber houses which are still lived in today confirm that the Nordic pine which grows in Finland's rough northern regions is **an ideal wood for construction**.

What makes it so perfect for house building? Owing to the extreme weather conditions, the trees grow very slowly. This short growth period results in a densely uniform structure with a fine network of resin-carrying ducts. Resin is a natural wood preservative which gives the wood its **high resilience and durability**.

This wood also **breathes well, regulates moisture** and has excellent heat-retention capacities, providing a fresh, pleasant, healthy indoor climate all year round.

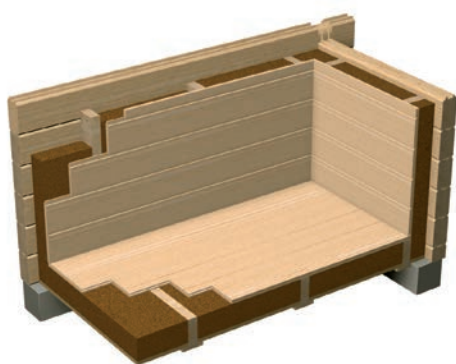
The Nordic pines selected by Artichouse are up to 120 years old and meet all the required quality standards to guarantee an exceptionally long life for your dream home!



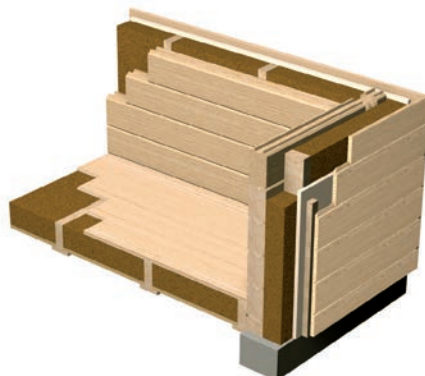


ARTICHOUSE: only the best for walls...

Our Artichouse 'thermo wall' - which can be fitted either inside or outside - and 'double log wall' meet both legal and economic requirements. The user-friendly layered Artichouse wall systems enable air to circulate, thus maintaining a constant and healthy indoor climate thanks to their excellent insulation values. Both the thermo wall (structure: log wall - insulation - timber frame construction - high-quality log panelling) and double log wall (structure: logs - insulation - timber frame construction - logs) guarantee real savings in energy and money while keeping your conscience clean, too.



Thermo wall inside



Thermo wall outside



Double log wall



Short-corner



High-Tech-Corner



Classic-Corner



City Corner

...and corners too

Corner joints are of vital importance in building log houses. The choice is great - but they do not all live up to their promises. Thanks to our decades of experience, we are able to offer four variants which have proven their worth in thousands of applications: The "City", "High-Tech", "Short" and "Classic" corners. Our high precision planing machines are controlled by special CAD/ CAM software designed specifically for Artichouse, ensuring outstanding workmanship with exceptionally accurate dimensions for perfect fitting.

TECHNIQUE

3 The logs

**"ArticLogs":
solid and reliable**

The planed logs, which we call ArticLogs, are very important to us: they provide robust protection, a healthy indoor climate and **give our houses their distinctive look.**

We attach great importance to offering a variety of log profiles together with top-quality materials and craftsmanship.



6



270 x 270 mm



200 x 270 mm



240 x 270 mm



220/240/270 x 200-240 mm



200/240 x 240-270 mm



140/170/200/230/250 mm

Our ArticLogs are made with tongue and groove joints to **control natural cracking**, give exceptional wind-proofing and ensure an accurate fit.

Whether you require heart-cut, solid or laminated logs, round or square, you can always rely on ArticLogs to last a lifetime - and more!



PLANED LOG



70 mm



92 mm



117 mm



140 mm



180 mm

LAMINATED LOG



88 mm



113 mm



135 mm



180 mm



200 mm

ROUND LOG



140 mm



170 mm



200 mm



230 mm



8

Pleasing to the eye, its spacious terrace surrounds the main rooms. The characteristic gable-end lets the light flood in through a curved window. The IDYLLE design is as attractive inside as it is outside.

The open-plan kitchen, dining room and lounge create a homely atmosphere and the large French windows let in lots of natural light.

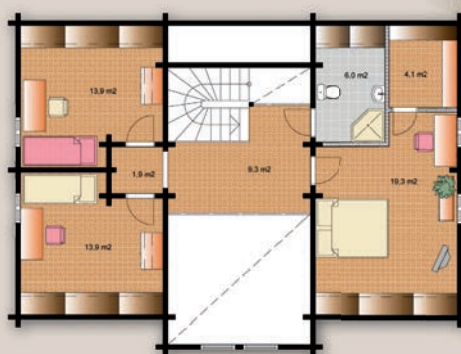
Years of happiness are guaranteed with the IDYLLE!

Total surface area: 173 m²

Ground floor: 96 m²

First floor: 77 m²

Patio: 42 m²



First floor



Ground floor



9

A house with a classic exterior - but an innovative layout including a generous kitchen/dining-room that opens onto a lounge with a cathedral ceiling. The great window on the first floor guarantees natural light.

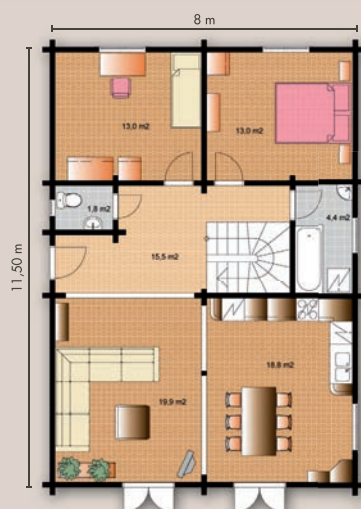
With four spacious bedrooms and a fifth with its own balcony, **the CHARME house also has an area on the first floor for you to utilise as you wish.**

Total surface area: 165 m²

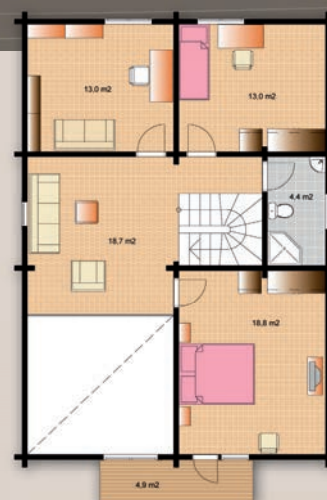
Ground floor: 92 m²

First floor: 73 m²

Balcony: 5 m²



Ground floor



First floor





10

The CASTEL model combines open space and functionality.

The ample 45 m² L-shaped lounge, gives you enough space to feel comfortable as well as entertain family and friends. It also makes a versatile space where you can readily create moods in the same room.

The CASTEL is typically the kind of house for real living, and one where you can easily imagine big family gatherings.

Total surface area: 168 m²

Ground floor: 94 m²

First floor: 74 m²

Patio and balcony: 23 m²



Ground floor

First floor





11

The first thing that strikes you when you see the **Riverbank** house **is the warm welcoming feel of the covered deck** - easy to imagine spending pleasant afternoons or evenings even when it's raining.

The large windows open up this aspect of the house, drawing the outside indoors.

The rest of the house offers cosy spaces with its numerous bedrooms and two bathrooms.

Total surface area: 156 m²

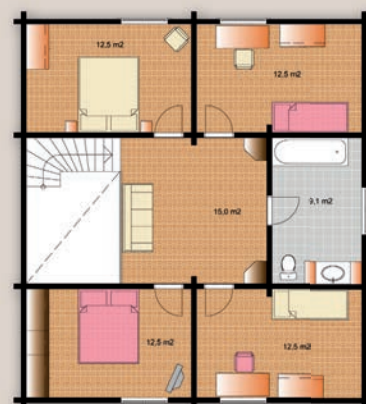
Ground floor: 76 m²

First floor: 80 m²

Patio: 13 m²



Ground floor



First floor



12

With its distinctive "mountain range" roof and charming little porch, the SIERRA house is particularly engaging!

The ground floor comprises a large open plan living space, surrounded by alcoves and functional rooms.

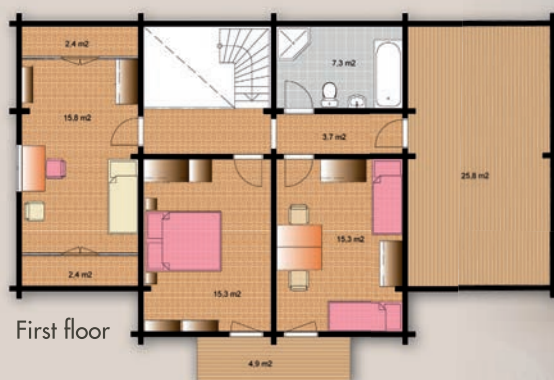
The attached garage with access from inside the house is an added bonus.

Total surface area: 202 m²

Ground floor: 103 m²

First floor: 99 m²

Patio and balcony: 9 m²





13

RIVIERA is an appealing bungalow, where everything is accessible.

The "night" part of the house has three spacious bedrooms.

The "daytime" area forms an extensive and welcoming space of 47 m². The walls are almost all glass, with tall windows that let the sunlight flood in, and a magnificent deck area where you can enjoy simply "being", outdoors in the fresh air.

Total surface area: 116 m²

Ground floor: 116 m²

Patio: 40 m²





14

COUNTRYSIDE, is a functional house with its own individual character: the little porches around the house lend an innovative touch to this model, designed to optimise space.

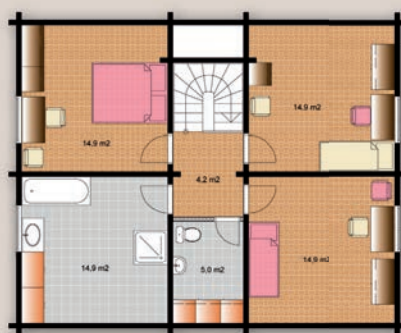
The spacious kitchen area opens directly onto the garden and the extensive lounge is bathed in natural light thanks to large windows on two walls, creating a very roomy and light atmosphere.

Total surface area: 144 m²

Ground floor: 70 m²

First floor: 74 m²

Patio: 8 m²



First floor



Ground floor





15

**PROVENCE,
a warm southern style
for this charming little
bungalow.**

The comfortable lounge, 31 m², has numerous French windows that can be thrown open to extend the room through to the partially-covered deck.

This extra room is not only a practical interior space, it adds character to the aesthetics of this enchanting house.

Total surface area: 96 m²

Ground floor: 96 m²

Patio: 23 m²





16

COASTAL, a house whose innovative architecture conjures up a mood of maritime adventure, as you look out "to sea" through the porthole window.

In addition to its fascinating look, the extensive (20 m²) first floor bedroom has the advantage of being removed from the rest of the house.

Total surface area: 103 m²

Ground floor: 73 m²

First floor: 30 m²

Patio: 8 m²





17

With its well thought-out exterior design, this compact house has a great-house feel.

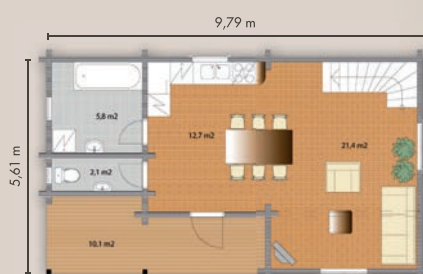
The large main room with an open-plan kitchen, and the spacious 26 m² bedroom upstairs make the COTTAGE an ideal home for small families.

Total surface area: 72 m²

Ground floor: 45 m²

First floor: 27 m²

Patio: 10 m²



Ground floor



First floor





18

Designed for commercial use as a café, restaurant or sports pavilion, the appeal of the COLONIAL lies in its covered veranda (54 m²), reminding us of those far-off countries where shelter from rain and drizzle - even sunshine! - may be welcome all year round.

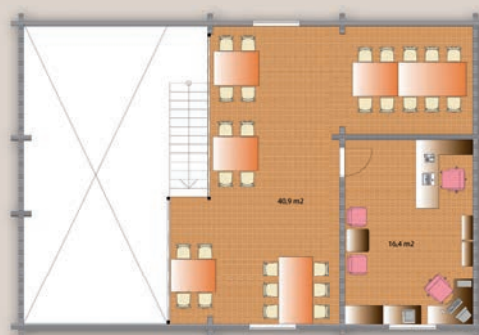
The Colonial can cater for large groups indoors or outdoors, upstairs or downstairs, and also has a utility part so that you can work comfortably in excellent conditions.

Total surface area: 156 m²

Ground floor: 96 m²

First floor: 60 m²

Patio: 54 m²



First floor



Ground floor





19

**CALIFORNIA,
a beautiful house with
modern architecture.**

Inward-facing for extra privacy, this interesting house is perfectly designed to incorporate an external feature such as a swimming pool or a beautiful garden.

Its L-shape divides up the house perfectly, and the appealing asymmetrical first floor, on one branch of the "L", offers great possibilities for extra accommodation.

Total surface area: 200 m²

Ground floor: 146 m²

First floor: 54 m²

Patio: 34 m²





20

The wide façade divided by a centrally inset front door gives the FLORIDA a really modern look.

One side is the "night" side of the house, the other is the common living area. A very high cathedral ceiling, gives a luxurious interior, well lit by the multiple windows.

Total surface area: 118 m²

First floor: 118 m²

Patio: 33 m²





21

The originality of the OCEANIC model lies in its raised loft feature, providing an extra open space with glorious views of the surrounding environment.

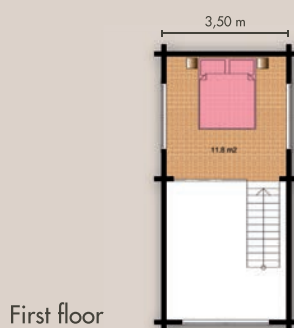
Viewed from outside, this offset central section gives this splendid house a special personality.

Total surface area: 88 m²

Ground floor: 76 m²

Ground floor: 12 m²

Patio: 18 m²





22

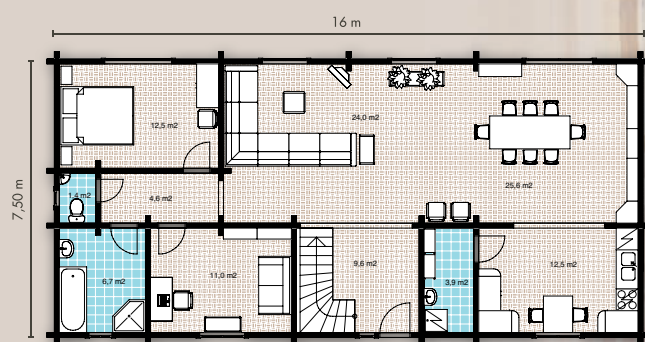
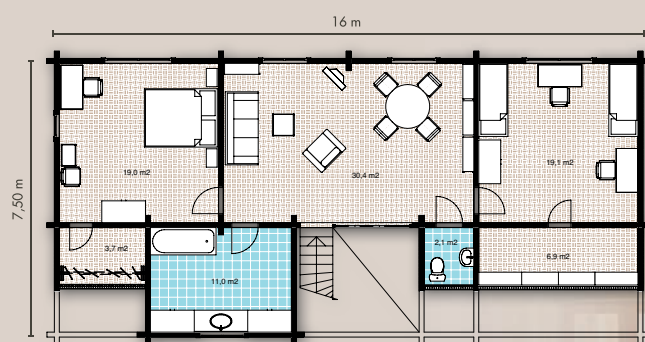
A curved roof at one side and an imposing façade on the other are the notable characteristics of the FUTURE: an original style for a well-designed, comfortable house.

Upstairs, the high-ceilinged bathroom and two spacious bedrooms are well lit by natural light from the wide windows.

Total surface area: 229 m²

Ground floor: 120 m²

First floor: 109 m²



First floor

Ground floor



Your house made to measure!

In addition to the models featured
in our catalogues we also
manufacture made-to-measure
houses, based on your own plans.

Here are just a few examples
of some of your creations...

